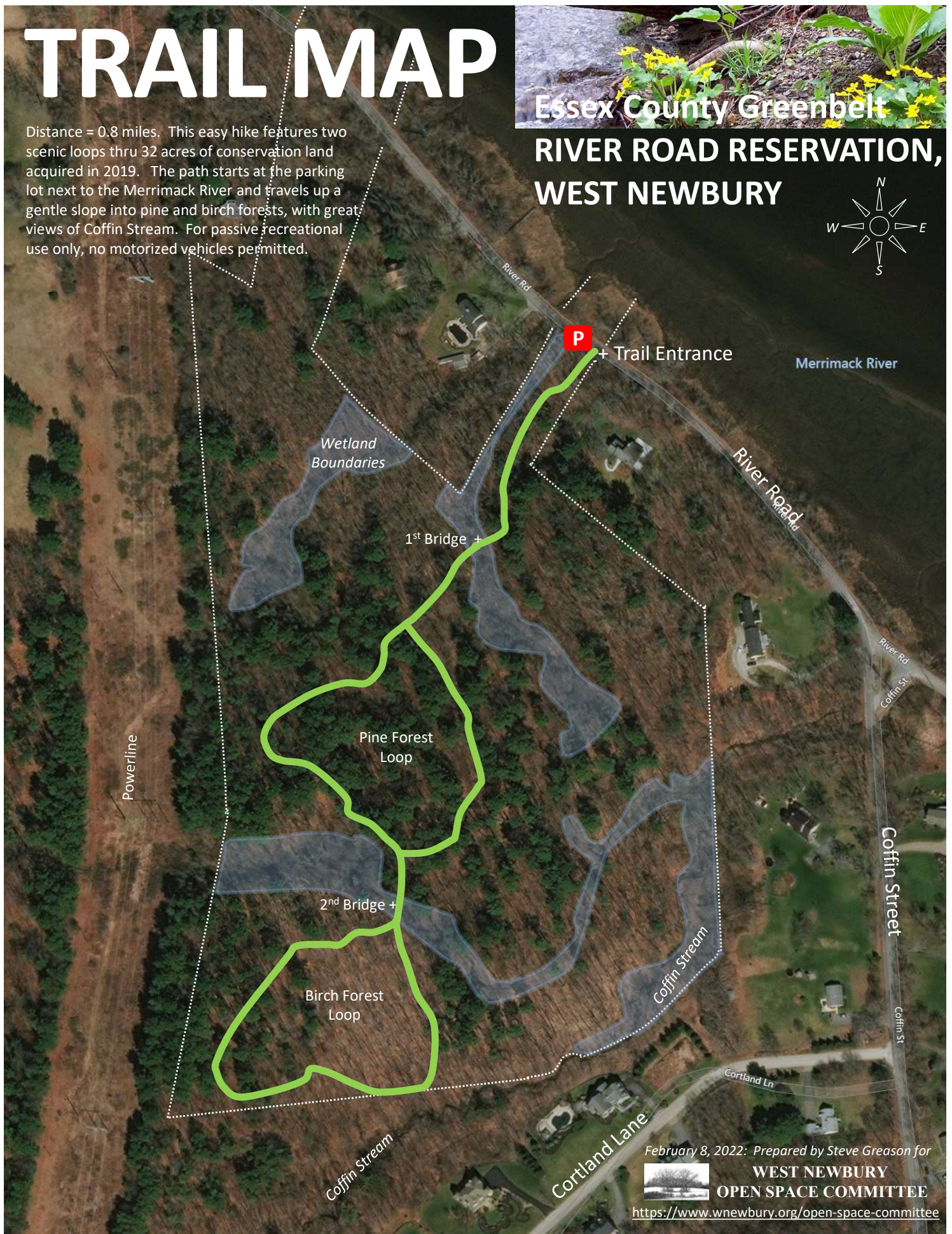


TRAIL MAP

Distance = 0.8 miles. This easy hike features two scenic loops thru 32 acres of conservation land acquired in 2019. The path starts at the parking lot next to the Merrimack River and travels up a gentle slope into pine and birch forests, with great views of Coffin Stream. For passive recreational use only, no motorized vehicles permitted.

Essex County Greenbelt RIVER ROAD RESERVATION, WEST NEWBURY



February 8, 2022: Prepared by Steve Greason for



**WEST NEWBURY
OPEN SPACE COMMITTEE**

<https://www.wnewbury.org/open-space-committee>